

**3M** Science.  
Applied to Life.™



# 3M Application Collection

# 3M Window Application Guide



## I want to... create short-term promotions

Whether it's letting your customers know about a 50% off sale or advertising your newest product, windows are a perfect tool to attract customers in from the streets. 3M offers effective and inexpensive films that will help drive sales and awareness for all of your promotional endeavours.



## I want to... build my brand

Whether it's a logo, tagline or descriptive imagery, your windows offer a perfect place to drive home your message and create instant impact. 3M makes out-of-home advertising easy with products that will help get your brand noticed and reinforce your positioning while customers are on the go.



## I want to... add privacy

Whether it's adding partial or complete privacy or frosted effects to allow natural light in, 3M has a wide variety of films that can help influence customers with impactful imagery while giving you the privacy you want.



## I want to... decorate

Whether it's an embellishment or an extreme makeover, let your windows be your canvas with 3M Decorative Film Solutions. From colourful designs to creative patterned effects, 3M Decorative Film will bring your wildest ideas to life and help transform your space into a beautifully decorated, upscale environment.

# 3M Window Application Guide

	3M Product	Film	Finish	Adhesive	Adhesive Colour	Thickness (mil)	Overlamine
I want to... create short-term promotions	3M™ Envision™ Print Film <b>48C</b>	Calendered	Opaque - White - Gloss	R	Grey	3	///
	3M™ Controltac™ Print Film <b>40C</b>	Calendered	Opaque - White - Matte or Gloss	R	Grey	3	///
	3M™ Controltac™ Print Film <b>40C-114</b>	Calendered	Transparent	R	Clear	3	///
	3M™ Graphic Film <b>IJ46</b>	Calendered	Opaque - White - Matte	C	Grey	4	///
	3M™ Graphic Film <b>IJ36</b>	Calendered	Opaque - White - Matte	C	Grey	3.4	///
	3M™ Scotchcal™ Changeable Translucent Graphic Film <b>IJ63</b>	Calendered	Translucent - White	C	Clear	3.2	///
	3M™ Controltac™ Graphic Film <b>3500C</b>	Calendered	Opaque - White - Matte	C	Grey	4	///
I want to... build my brand	3M™ Changeable Window Graphic Film <b>IJ61</b>	Calendered	Transparent	C	Clear	3	///
	3M™ Envision™ Print Wrap Film <b>LX480mC</b> (Latex/UV Printers)	Non-PVC	High performance, non-PVC film with a luster finish	R	Grey	2	//
	3M™ Envision™ Print Wrap Film <b>SV480mC</b> (Solvent/UV Printers)	Non-PVC	High performance, non-PVC film with a luster finish	R	Grey	2	//
	3M™ Controltac™ Graphic Film with Comply™ v3 Adhesive <b>IJ180Cv3</b>	Cast	Opaque - White	R	Grey	2	⊘ // ⊘
	3M™ Controltac™ Changeable Graphic Film with Comply™ Adhesive <b>IJ3552C</b>	Cast	Opaque - White	C	Grey	2	⊘ //
	3M™ Controltac™ Graphic Film with Comply™ Adhesive <b>IJ160C</b>	Calendered	Opaque - White	R	Grey	4	⊘ //
	3M™ Scotchcal™ Changeable Graphic Film <b>IJ3555</b>	Calendered	Opaque - White	C	Grey	4	⊘ //
	3M™ Scotchcal™ Translucent Graphic Film <b>IJ3630-20</b>	Cast	Translucent - White	P	Clear	2	⊘ //
	3M™ Scotchcal™ Clear View Graphic Film <b>IJ8150</b>	Cast	Transparent	C	Clear	2	⊘ // ⊘
	3M™ Controltac™ Graphic Film <b>180mC-10</b>	Cast	Opaque - White	R	Grey	2	⊘ //
	3M™ Print Wrap Film <b>IJ180mC-114</b>	Cast	Transparent	R	Clear	2	⊘ //
I want to... add privacy	3M™ Scotchcal™ Graphic Film <b>IJ3650-114</b>	Cast	Transparent	P	Clear	2	⊘ //
	3M™ FASARA™ Glass Finishes	Polyester	65+ designs	P	Clear	2	N/A
	3M™ Window Graphic Film <b>8170-P40</b>	Cast	White on the image side, black on the reverse side	R	Clear	4	⊘ //
	3M™ Window Graphic Film <b>8170-P50</b>	Cast	White on the image side, black on the reverse side	R	Clear	4	⊘ //
I want to... decorate	3M™ Scotchcal™ Perforated Window Graphic Film <b>IJ67</b> (40% perforation)	Calendered	White on the image side, black on reverse side	R	Clear	5.9	⊘ //
	3M™ Scotchcal™ ElectroCut Graphic Film Series <b>7725</b>	Cast	60+ colours	P	Clear	2	N/A
	3M™ Scotchcal™ Graphic Film Series <b>50</b>	Calendered	High Gloss; 25+ colours	R	Clear	3	N/A
	3M™ Scotchcal™ Dusted/Frosted Crystal Special Effects Graphic Film <b>7725SE</b>	Cast	Translucent white or frosted crystal & 4 colours	P	Clear & Grey	2-3.8	N/A
	3M™ Promotional Window Film <b>1180-14IXC</b>	Calendered	Clear	R	Clear	4	N/A
3M™ DICHROIC Glass Finishes	Polyester	Two Spectrums: Chill and Blaze	P	Clear	1.3	N/A	

C = Changeable (no heat required) R = Removable (heat may be required for removal) P = Permanent (not meant to be removed)

## Overlamine Options

///	<b>2-mil Cast</b>	8518, 8548G Gloss; 8519, 8549L Luster; 8520, 8550M Matte; 8915 Ultra Matte
////	<b>4-mil Calendered</b>	8508 Gloss, 8509 Luster, 8510 Matte
⊘	<b>Optically Clear</b>	8914
⊘	<b>Easily Cleanable</b>	8528, 8548G, 3658G Gloss; 3660M Matte
⊘	<b>Graffiti-Resistant</b>	8991, 8991R, 8993, 8995, AG-4, AG-7
⊘	<b>Screen Clear</b>	9740i, 1920

## I want to... stay connected

### In Person

3M's Canada-wide team of Account Representatives will come to your office for a personal consultation.  
**3MGraphics.ca@mmm.com**

### By Phone

3M's Information Centre can answer all your 3M product questions.  
**1-800-3M-Helps**  
**(1-800-364-3577)**

### Online

Visit **3MGraphics.ca** for the latest product news. Follow 3M Canada Graphics on Facebook.

Sign up on 3MGraphics.ca to receive At the Core, an eNewsletter with monthly updates from 3M.

# 3M Floor Application Guide



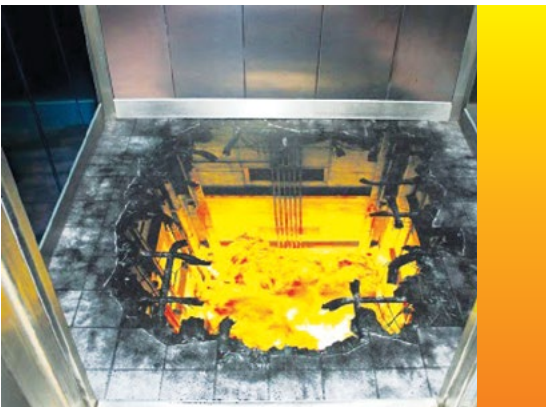
## I want to... create short-term promotions

Whether it's a short-term giveaway or a celebrity endorsed contest, 3M graphic solutions will help generate excitement for your promotions! Floor graphics are the perfect coupling to a booth, point of purchase stand or other advertisement to help drive customer awareness and excitement, as well as sales.



## I want to... build my brand

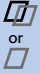
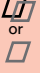
Whether it's a logo, slogan or some other interpretation of your brand, help reinforce your positioning with 3M graphic solutions. Floor graphics can help influence a consumer's path to purchase, connecting your target market to your brand.



## I want to... inspire




Whether it's an optical illusion, a surprise or another engaging image, capture attention using 3M graphic solutions. Create interesting designs with ease that will help your message stand out in a crowd and through competitive clutter.

# 3M Floor Application Guide

	3M Product	Film	Finish	Adhesive	Adhesive Colour	Thickness (mil)	Floor Type	Overlamine
I want to... create short-term promotions	3M™ Controltac™ Print Film <b>40C</b>	Calendered	Opaque - White - Matte or Gloss	R	Grey	3	Indoor floor & low pile carpet	 or 
	3M™ Controltac™ Print Film <b>40C-114</b>	Calendered	Transparent	R	Clear	3	Indoor floor & low pile carpet	 or 
	3M™ Envision™ Print Film <b>48C-20R</b>	Calendered	Opaque - White - Gloss	R	Grey	3	Indoor floor & low pile carpet	
I want to... build my brand	3M™ Controltac™ Graphic Film <b>IJ162-10</b>	Calendered	Opaque - White	R	Grey	4	Indoor floor	 or 
	3M™ Scotchcal™ Graphic Film Series <b>3662</b>	Cast	Opaque - White	R	Grey	2	Cement sidewalk, unpainted stairs, and walls	
I want to... inspire	3M™ Controltac™ Print Film <b>40C</b>	Calendered	Opaque - White - Matte or Gloss	R	Grey	3	Indoor floor & low pile carpet	 or 
	3M™ Controltac™ Print Film <b>40C-114</b>	Calendered	Transparent	R	Clear	3	Indoor floor & low pile carpet	 or 

C = Changeable (no heat required) R = Removable (heat may be required for removal) P = Permanent (not meant to be removed)

## Overlamine Options

	Luster Clear	3645, 8509
	High Gloss Clear	3648
	Highly Textured Clear	3647

## I want to... stay connected

### In Person

3M's Canada-wide team of Account Representatives will come to your office for a personal consultation.  
[3MGraphics.ca@mmm.com](mailto:3MGraphics.ca@mmm.com)

### By Phone

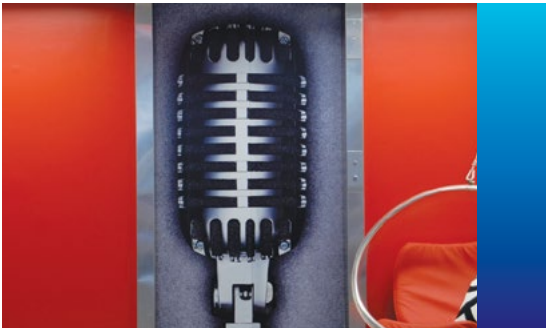
3M's Information Centre can answer all your 3M product questions.  
**1-800-3M-Helps**  
**(1-800-364-3577)**

### Online

Visit [3MGraphics.ca](http://3MGraphics.ca) for the latest product news. Follow 3M Canada Graphics on Facebook.

Sign up on [3MGraphics.ca](http://3MGraphics.ca) to receive At the Core, an eNewsletter with monthly updates from 3M.

# 3M Wall Application Guide



## I want to... create short-term promotions

Whether it's for a contest, trade show or for the prime location in the mall food court, turn any wall into a promotional opportunity. 3M's short-term graphics products will allow you to maximize your advertising budget by adding a new awareness layer to your promotional campaign.



## I want to... build my brand

Whether it's showcasing your logo or highlighting your message, walls are a perfect medium to create long-term branding. 3M graphics products can help maximize the return on investment of out-of-home advertising campaigns by capturing attention and influencing customer purchase behaviours.



## I want to... maximize my brick

Whether it's a brick or cinder block wall, maximize your advertising space and make a true impact with 3M's line of textured surface graphics products. Any textured space can become a billboard for your message, promotion or brand.



## I want to... decorate

Whether you want to completely change a wall's appearance, or make it more functional as a whiteboard, 3M has over 900 options to help you. 3M's Decorative Surface Finishes can provide the ambience you need from the warmth of wood grain to the sleek feel of metal or the cool essence of natural stone to pure colours.

# 3M Wall Application Guide

	3M Product	Film	Finish	Adhesive	Adhesive Colour	Thickness (mil)	Wall Type	Overlamine
I want to... create short-term promotions	3M™ Envision™ Print Film <b>48C</b>	Calendered	Opaque - White - Gloss	R	Grey	3	Flat	///
	3M™ Controltac™ Print Film <b>40C</b>	Calendered	Opaque - White - Matte or Gloss	R	Grey	3	Flat	///
	3M™ Controltac™ Print Film <b>40C-114</b>	Calendered	Transparent	R	Clear	3	Flat	///
	3M™ Graphic Film <b>IJ46</b>	Calendered	Opaque - White - Matte	C	Grey	4	Flat	///
	3M™ Graphic Film <b>IJ36</b>	Calendered	Opaque - White - Matte	C	Grey	3.4	Flat	///
	3M™ Scotchal™ Graphic Film <b>IJ35</b>	Calendered	Opaque - White - Matte or Gloss	P	Grey	3.2	Flat	///
	3M™ Scotchal™ Graphic Film with Comply™ Adhesive <b>IJ35C</b>	Calendered	Opaque - White	P	Grey	3.2	Flat	//
	3M™ Controltac™ Graphic Film <b>3500C</b>	Calendered	Opaque - White - Matte	C	Grey	4	Flat	N/A
	3M™ Scotchal™ Graphic Film <b>Series 50</b>	Calendered	High gloss, 25+ colours	R	Clear	3	Flat	N/A
I want to... build my brand	3M™ Envision™ Print Wrap Film <b>LX480mC</b> (Latex/UV Printers)	Non-PVC	High performance, non-PVC film with a luster finish	R	Grey	2	Full-Ultra conformable	//
	3M™ Envision™ Print Wrap Film <b>SV480mC</b> (Solvent/UV Printers)	Non-PVC	High performance, non-PVC film with a luster finish	R	Grey	2	Full-Ultra conformable	//
	3M™ Controltac™ Graphic Film with Comply™ v3 Adhesive <b>IJ180Cv3, IJ180mC-10</b>	Cast	Opaque - White	R	Grey	2	Flat or contoured	⊗ // ⊗
	3M™ Controltac™ Changeable Graphic Film with Comply™ Adhesive <b>IJ3552C</b>	Cast	Opaque - White	C	Grey	2	Flat or contoured	⊗ // ⊗
	3M™ Controltac™ Graphic Film with Comply™ Adhesive <b>IJ160C</b>	Calendered	Opaque - White	R	Grey	4	Flat	// ⊗
	3M™ Scotchal™ Changeable Graphic Film <b>IJ3555</b>	Calendered	Opaque - White	C	Grey	4	Flat	// ⊗
	3M™ Controltac™ Graphic Film with Comply™ Adhesive Series <b>180mC</b>	Cast	Opaque - 80+ Colours	P	Clear, Grey	2	Full	// # # #
	3M™ Print Wrap Film <b>IJ180mC-114</b>	Cast	Transparent	R	Clear	2	Flat or contoured	// ⊗
	3M™ Scotchal™ High Tack Graphic Film <b>IJ39-20</b>	Vinyl	Opaque - White - Matte	P	Clear	3.5	Flat	///
I want to... maximize my brick	3M™ Envision™ Print Wrap Film <b>LX480mC</b> (Latex/UV Printers)	Non-PVC	High Performance, non-PVC film with a luster finish	R	Grey	2	Textured brick or cinder block	#
	3M™ Envision™ Print Wrap Film <b>SV480mC</b> (Solvent/UV Printers)	Non-PVC	High Performance, non-PVC film with a luster finish	R	Grey	2	Textured brick or cinder block	#
	3M™ Scotchal™ Graphic Film for Textured Surfaces <b>IJ8624</b>	Cast	Opaque - White	R	Grey	2	Textured brick or cinder block	#
	3M™ Scotchlite™ Print Wrap Film <b>780mC-10R</b>	Cast	Opaque - White	R	Clear	6.6	Full-Ultra conformable	// #
I want to... decorate	3M™ DI-NOC™ Architectural Finishes	Cast or Calendered	900+ finishes	P	Clear	8	Flat	⊗
	3M™ Print Wrap Film <b>IJ180mC-10</b>	Cast	Opaque - White	R	Grey	2	Flat or contoured	// # ⊗
	3M™ Controltac™ Graphic Film with Comply™ Adhesive Series <b>180mC</b>	Cast	Opaque - 80+ Colours	R	Clear, Grey	2	Flat or contoured	// # ⊗

C = Changeable (no heat required) R = Removable (heat may be required for removal) P = Permanent (not meant to be removed)

Overlamine Options	
/// 2-mil Cast	8518, 8548G Gloss; 8519, 8549L Luster; 8520, 8550M Matte; 8915 Ultra Matte
//// 4-mil Calendered	8508 Gloss, 8509 Luster, 8510 Matte
# Textured Surface	8548G, 8524
⊗ Graffiti-Resistant	8991, 8991R, 8993, 8995
⊗ Easily Cleanable	8528, 3658G, 3660M Matte
# Designer	8900

## I want to... stay connected

### In Person

3M's Canada-wide team of Account Representatives will come to your office for a personal consultation.  
**3MGraphics.ca@mmm.com**

### By Phone

3M's Information Centre can answer all your 3M product questions.  
**1-800-3M-Helps**  
**(1-800-364-3577)**

### Online

Visit **3MGraphics.ca** for the latest product news. Follow 3M Canada Graphics on Facebook.

Sign up on 3MGraphics.ca to receive At the Core, an eNewsletter with monthly updates from 3M.

Two-mil cast films are typically the best choice for indoor smooth surface wall graphics. However, the user is responsible for determining the product's suitability, including adhesion and, if required, removal characteristics. Due to the wide variability of smooth indoor walls, neither finished graphics nor removal is warranted, even for removable or changeable films.

# 3M Signage Application Guide



## I want to... transform my sign

Whether you're constructing a new sign or renovating an existing one, 3M's architectural finishes help you get the look you want at a fraction of the cost. These decorative surface finishes offer the warmth of wood grain, sleek feel of metal, cool essence of natural stone and pure colours.



## I want to... build my brand

Whether it's a free-standing building or a mounted sign, 3M will help you stand out in the crowd and make the right impression to grow your business. Signs with exceptional image quality, consistency and performance with bolder, brighter images come alive and are made to last by withstanding the elements.



## I want to... optimize my LEDs

Whether you want to reduce your energy consumption or increase your light output, 3M offers a variety of signage solutions. The films allow you to maintain your sign's brightness by using fewer LEDs, or increase its brightness by diffusing light more effectively with a standard number of LEDs.



## I want to... make an impact day and night

Whether it's for improving the brightness of your sign or to create electrifying images that capture the spotlight, 3M™ Light Management Films give you a number of innovative solutions and ways to transport and distribute light while displaying maximum colour clarity and backlit brightness.



# 3M Signage Application Guide

	3M Product	Film	Finish	Adhesive	Thickness (mil)	Electronically Cuttable	Ink Type	Thermoformable	Overlamine
<b>I want to... transform my sign</b>	3M™ DI-NOC™ Architectural Finishes for Exterior	Vinyl	20+ Finishes	P	8	Yes	Non Printable	Limited	
<b>I want to... build my brand</b>	3M™ Scotchcal™ Translucent Graphic Film Series <b>3630</b> (for Fluorescent Lighting Applications)	Cast	Matte - 57 standard colours; custom colours available	P	2	Yes	Screen Printing	Yes	
	3M™ Scotchcal™ Translucent Graphic Film <b>IJ3630-20</b>	Cast	Matte - White	P	2	Yes	Solvent, Latex and UV Inkjet Printing	No	
	3M™ Scotchcal™ Graphic Film <b>IJ3650-114</b>	Cast	Luster - Clear	P	2	Yes	Solvent, Latex and UV Inkjet Printing	No	
	3M™ Panagraphics™ III Wide Width Flexible Substrate	19 ounces/sq. ft.	Semi-Gloss - White	P	22	Yes	Solvent, Latex and UV Inkjet Printing	No	
	3M™ Scotchcal™ Changeable Translucent Graphic Film <b>IJ63-20</b> (Short-term)	Calendared	Matte - White	P	3.2	Yes	Solvent, Latex and UV Inkjet Printing	No	
<b>I want to... optimize my LEDs</b>	3M™ Envision™ Flexible Substrate <b>FS-1</b>	19 ounces/sq. ft.	Semi-Gloss - White	P	22	No	Solvent, Latex and UV Inkjet Printing	No	
	3M™ Envision™ Translucent Film Series <b>3730</b> (for LED Lighting Applications)	Cast	Matte - 20 standard colours; custom colours available	P	2	Yes	Screen Printing	Yes	
	3M™ Envision™ Translucent Film Series <b>IJ3730-50</b> (50% Diffusion) & <b>IJ3730-60</b> (60% Diffusion)	Cast	Matte - White	P	2	Yes	Solvent, Latex and UV Inkjet Printing	No	N/A
	3M™ Envision™ Diffuser Films <b>3730-50</b> (50% Diffusion) & <b>3730-60</b> (60% diffusion)	Cast	Matte - White	P	2	Yes	Non Printable	Yes	N/A
<b>I want to... make an impact day and night</b>	3M™ Dual Colour Films: Custom Colour <b>3635-200</b> , White Perforated <b>3635-210</b> , and Black Perforated <b>3635-222</b>	Cast	Matte - Black, White; custom colours available	P	4.5	Yes	Solvent, Latex and UV Inkjet Printing	No	
	3M™ Blockout Films: White <b>3635-20B</b> and Black <b>3635-22B</b>	Cast	Matte - Black, White	P	4	Yes	Screen Printing	No	
	3M™ Day/Night Films: <b>3635-0171</b> (black in the day and white at night or when lit)	Cast	Charcoal Grey	P	3	Yes	Non Printable	No	
	3M™ Day/Night Films: <b>3635-91</b> (grey in the day and white at night or when lit)	Cast	Green - Grey	P	3	Yes	Non Printable	No	
	3M™ Diffuser Films <b>3635-30</b> (30% diffusion), <b>3635-70</b> (60% Diffusion)	Cast	White	P	2	Yes	Non Printable	Yes	
	3M™ Light Enhancement Films: <b>3635-100</b>	Cast	Matte - White	P	5.5	Yes	Non Printable	No	N/A
3M™ Chrome Graphic Films: <b>3635-110</b>	Cast	Matte - Chrome	P	3	Yes	Non Printable	Yes	N/A	

C = Changeable (no heat required) R = Removable (heat may be required for removal) P = Permanent (not meant to be removed)

Overlamine Options	
	2-mil Cast 8548G Gloss, 8660M Matte
	4-mil Calendared 8509 Luster
	Easily Cleanable 3658G Gloss, 3660M Matte
	Screen Clear 1920DR, 9740i
	Optional, see tech bulletin

## I want to...stay connected

### In Person

3M's Canada-wide team of Account Representatives will come to your office for a personal consultation. [3MGraphics.ca@mmm.com](mailto:3MGraphics.ca@mmm.com)

### By Phone

3M's Information Centre can answer all your 3M product questions. **1-800-3M-Helps (1-800-364-3577)**

### Online

Visit [3MGraphics.ca](http://3MGraphics.ca) for the latest product news. Follow 3M Canada Graphics on Facebook.

Sign up on [3MGraphics.ca](http://3MGraphics.ca) to receive At the Core, an eNewsletter with monthly updates from 3M.

# 3M Fleet Application Guide



## I want to... create short-term promotions

Whether it's advertising at a weekend event or promoting your newest product at the hottest concert of the summer, create buzz and excitement using your vehicles. Maximize your space and budget by letting your fleet reinforce your message and get noticed using 3M's wide selection of promotional graphics products.



## I want to... build my brand

Whether it's a plane, train or automobile, get your brand noticed on the go with 3M graphic solutions. Adding fleet wraps into an out-of-home advertising campaign will help influence customers on their path to purchase and will increase the effectiveness of your marketing campaign by being present—not just in one location, but all over the map.



## I want to... make an impact at night

Whether it's a tractor trailer that delivers your material or a promotional vehicle advertising your newest product, there's only one thing that's important—to be seen at night. Let 3M help you make an impact on your customers by allowing your message to stand out day and night with reflective graphics.



## I want to... personalize

Whether it's for branding or personal preference, you can stand out from the crowd by giving your fleet a whole new look with 3M's line of personalization films. Change your colour as often as you change your mood—all while having the added benefit of paint protection.

# 3M Fleet Application Guide

	3M Product	Film	Finish	Adhesive	Adhesive Colour	Thickness (mil)	Application	Overlamine
I want to... create short-term promotions	3M™ Envision™ Print Film <b>48C</b>	Calendered	Opaque - White - Gloss	R	Grey	3	Flat	
	3M™ Controltac™ Print Film <b>40C-114</b>	Calendered	Transparent	R	Grey	3	Flat	
	3M™ Scotchal™ Changeable Graphic Film <b>IJ3555, 3500C</b>	Calendered	Opaque - White	C	Grey	4	Partial	
	3M™ Controltac™ Print Film <b>40C</b>	Calendered	Opaque - White - Matte or Gloss	R	Grey	3	Flat	
	3M™ Transit Wrap Graphic Film <b>IJ46</b>	Calendered	Opaque - White - Matte	C	Grey	4	Flat	
	3M™ Transit Ad Graphic Film <b>IJ36</b>	Calendered	Opaque - White - Matte	C	Grey	3.4	Flat	
	3M™ Scotchal™ Graphic Film Series <b>50</b>	Calendered	High gloss; 25+ colours	R	Clear	3	Flat	N/A
I want to... build my brand	3M™ Envision™ Print Wrap Film <b>LX480mC</b> (Latex/UV Printers)	Non-PVC	High Performance, non-PVC film with luster finish	R	Grey	2	Full - ultra conformable	
	3M™ Envision™ Print Wrap Film <b>SV480mC</b> (Solvent/UV Printers)	Non-PVC	High Performance, non-PVC film with luster finish	R	Grey	2	Full - ultra conformable	
	3M™ Controltac™ Graphic Film with Comply™ v3 Adhesive <b>IJ180Cv3, IJ180mC-10, 180mC</b>	Cast	Opaque - White; 80+ colours in 180mC	R	Grey	2	Full	
	3M™ Controltac™ Wrap Film with Comply™ v3 Adhesive <b>IJ380Cv3</b>	Cast	Opaque - White	R	Grey	2	Full - ultra conformable	
	3M™ Controltac™ Changeable Graphic Film with Comply™ Adhesive <b>IJ352C</b>	Cast	Opaque - White	C	Grey	2	Full	
	3M™ Controltac™ Graphic Film with Comply™ Adhesive <b>IJ160C</b>	Calendered	Opaque - White	R	Grey	4	Partial	
	3M™ Controltac™ Graphic Film <b>IJ181</b>	Cast	Opaque - White	P	Grey	2	Full - Stainless Steel	
	3M™ Scotchal™ ElectroCut Graphic Film Series <b>7725/7125</b>	Cast	60+ colours	P	Clear	2	Full	N/A
	3M™ Print Wrap Film <b>IJ180mC-120</b>	Cast	Luster	R	Silver	2	Full	
	3M™ Print Wrap Film <b>IJ180mC-114</b>	Cast	Transparent - Luster	R	Clear	2	Full	
	3M™ Scotchal™ Window Graphic Film <b>8170-P40</b>	Cast	White on the image side, black on the reverse side	R	Clear	4	Windows only	
	3M™ Scotchal™ Window Graphic Film <b>8170-P50</b>	Cast	White on the image side, black on the reverse side	R	Clear	4	Windows only	
	3M™ Scotchal™ Clear View Graphic Film <b>IJ8150</b>	Cast	Transparent	C	Clear	2	Windows only	
I want to... make an impact at night	3M™ Scotchal™ Reflective Graphic Film <b>IJ680, IJ680CR, 680CR</b>	Calendered	Opaque - White; 680 and 680CR in 10+ colours	P/R	Clear	7	Full	
	3M™ Scotchal™ Reflective Graphic Film <b>IJ5100R, 5100R</b>	Calendered	Matte - 20 standard colours; custom colours available	R	White	7	Full	
	3M™ Scotchal™ Reflective Graphic Film <b>IJ5000, 5000</b>	Calendered	Matte - White	P	White	6	Full	
	3M™ Scotchlite™ Print Wrap Film <b>780mC-10R</b>	Cast	Opaque - White	R	Clear	6.6	Full - Ultra conformable	
I want to... personalize	3M™ Wrap Film Series <b>1080</b>	Cast	90+ colours and finishes	R	Grey, Clear	2	Full	
	3M™ Controltac™ Graphic Film with Comply™ Adhesive Series <b>180mC</b>	Cast	Opaque - 80+ colours	R	Grey, Clear	2	Flat or contoured	

Overlamine Options	
<b>2-mil Cast</b>	8518, 8548G Gloss; 8519, 8549L Luster; 8520, 8550M Matte; 8915 Ultra Matte
<b>4-mil Calendered</b>	8508 Gloss, 8509 Luster, 8510 Matte
<b>Optically Clear for Perforated Films</b>	8914
<b>Easily Cleanable</b>	8528
<b>Optically Clear</b>	8914
<b>Designer</b>	8900

## I want to... stay connected

### In Person

3M's Canada-wide team of Account Representatives will come to your office for a personal consultation.  
**3MGraphics.ca@mmm.com**

### Online

Visit **3MGraphics.ca** for the latest product news. Follow 3M Canada Graphics on Facebook.

### By Phone

3M's Information Centre can answer all your 3M product questions.  
**1-800-3M-Helps**  
**(1-800-364-3577)**

Sign up on 3MGraphics.ca to receive At the Core, an eNewsletter with monthly updates from 3M.

# 3M Anti-Graffiti Solutions Application Guide



## I want to... protect my brand

Whether it's to offer protection against graffiti or to prevent damages caused by mother nature, protect your brand with 3M. 3M™ Specialty Overlaminates offer high protection from UV fading, dirt, are easy to clean, and resist most scratches and other types of graffiti.



## I want to... protect my glass surfaces

Whether it's the outdoor window of a storefront, a bus shelter or even mirrors in a public place, protect these surfaces from most scratches, acid etch, gouges and tagging with a 3M Specialty Overlaminates. 3M's line of anti-graffiti films are intended to be a sacrificial layer to help protect glass and minimize damage. Why replace an entire window when you can simply replace a cost-effective barrier?

## I want to... stay connected

### In Person

3M's Canada-wide team of Account Representatives will come to your office for a personal consultation. email: [3MGraphics.ca@mmm.com](mailto:3MGraphics.ca@mmm.com)

### By Phone

3M's Information Centre can answer all your 3M product questions. **1-800-3M-Helps** (1-800-364-3577)

### Online

Visit [3MGraphics.ca](http://3MGraphics.ca) for the latest product news. Follow 3M Canada Graphics on Facebook.

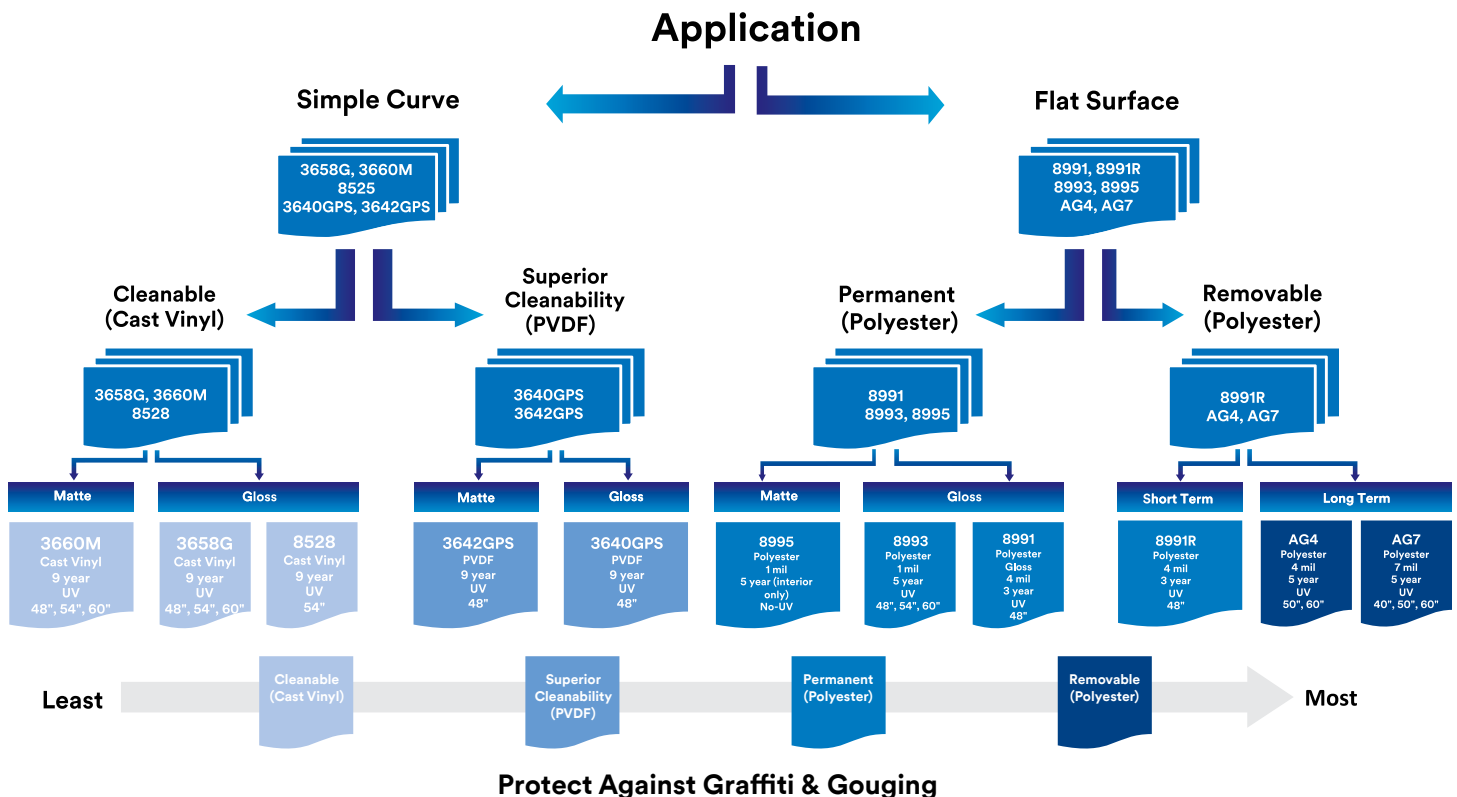
Sign up on [3MGraphics.ca](http://3MGraphics.ca) to receive At the Core, an eNewsletter with monthly updates from 3M.

# 3M Anti-Graffiti Application Guide

	3M Product	Finish	Material	Thickness (mil)	Adhesive	Description	Excepted Performance Life (in years)
I want to... protect my brand	3M™ Scotchcal™ Gloss Overlaminate <b>3658G</b>	Gloss	Cast Vinyl	2	Permanent	High protection from UV fading, dirt; Easy to clean; Thermoformable on plastic substrates.	9
	3M™ Scotchcal™ Matte Overlaminate <b>3660M</b>	Matte	Cast Vinyl	2	Permanent	Matte version of 3658G	9
	3M™ Scotchcal™ Gloss Overlaminate <b>8528</b>	Gloss	Cast Vinyl	2	Permanent	Built in top coat that increases durability and cleanability. Superior UV protection from fading.	9
	3M™ Scotchcal™ Gloss Overlaminate <b>3640GPS</b>	Gloss	PVDF	1	Permanent	High protection from UV fading, dirt, most graffiti; Easy to clean; Thermoformable on plastic substrates.	9
	3M™ Scotchcal™ Matte Overlaminate <b>3642GPS</b>	Matte	PVDF	1	Permanent	Matte version of 3642GPS	9
I want to... protect my glass surfaces	Scotchgard™ Graphic and Surface Protection Film <b>8991</b>	High Gloss	Polyester	4	Permanent	Extra thickness and special hard coat provide superior substrate and surface protection from stains, abrasion, gouges, UV light, graffiti; easy to clean.	3
	Scotchgard™ Removable Graphic and Surface Protection Film <b>8991R</b>	High Gloss	Polyester	4	Removable	Removable version of 8991 except when used on printed or unprinted films.	3
	Scotchgard™ Graphic and Surface Protection Film <b>8993</b>	High Gloss	Polyester	1	Permanent	Superior substrate and surface protection from graffiti scratches, easy to clean.	5
	3M™ Anti-Graffiti Film <b>AG-4</b>	Gloss	Polyester with durable abrasion resistant coating.	4	Removable	For protecting glass surfaces from most forms of graffiti such as scratches, acid-etching and gouges in retail, public facilities and any street-level glass applications.*	10+
	3M™ Anti-Graffiti Film <b>AG-7</b>	Gloss	Polyester with durable abrasion resistant coating.	7	Removable	For protecting glass surfaces from most forms of graffiti such as scratches, acid-etching and gouges in retail, public facilities and any street-level glass applications.*	10+

\*This film is intended to be a sacrificial layer to help protect against damage from graffiti, glass etching, and other commonly used methods to mark glass.

PVDF = Polyvinylidene fluoride



# Graphic Application Tools

At 3M, we are continuously looking for ways to improve the large-format graphics industry. You can count on 3M to develop tools and materials to help you achieve the best possible results for your customers. These graphic installation tools are designed for comfort and assist the installer in applying large-format graphics easier and faster.

## 3M™ Hand Applicator PA-1

Inexpensive, reusable squeegee-type applicator is flexible yet durable. This tool is the perfect solution for applying film or premask.



## 3M™ Power Grip Applicator for 3M™ Comply™ Adhesive Films CPA-1

Designed only for films with the Comply™ Adhesive feature. The applicator makes it easy to cover large areas with a uniform distribution of pressure. The felt-wrapped edge disperses air evenly for a virtually bubble-free application, and the rounded grip is more comfortable for the installer.



## 3M™ Low Friction Sleeve SA-1

Reusable paper sleeve slips over the PA-1 applicators to protect the substrate from being marked or scratched.

## 3M™ Rivet Brush Applicator RBA-1

Graphics are easier to install over rivets using this traditional applicator tool.



## 3M™ Edge Sealing Tape 8914

Used to improve the resistance to environmental damage and enhance the durability of the graphics. Protect film edges and seams.



## 3M™ Tape Primer 94

Used to promote adhesion of 3M™ Films to surfaces such as many plastics and paints. Recommended for use especially when conforming film to deep channels.



## 3M™ Power Grip Rivet Brush Applicator RBA-3

Burnish all films over rivets with ease. The larger handle grip is more comfortable and encourages full arm movement. Burnish film over rivets faster with the stiffer bristles.



## 3M™ Rapid Roller Applicator CPA-2

Designed exclusively for 3M™ Controltac™ Graphic Films with Comply™ Adhesive. The 3M rapid roller applicator makes it easy to apply film. This tool has a rounded rubber grip that is more comfortable and encourages full arm movement.



## 3M™ Power Grip Multi-Pin Air Release Tool MPP-1

Features a uniquely designed grip. With multiple pins, only a single motion is needed per rivet, saving time during installation on all films.



### 3M™ Vehicle Channel Applicator Tool VCAT-2

Custom designed durable soft foam roller for vehicle channels.



### 3M™ Knifeless Tapes

Precisely and efficiently cut through graphic film without a knife and without surface damage to create a clean line.



### 3M™ Air Release Tool 391x

Puncture film that has already been applied to a substrate to remove entrapped air bubbles.



### 3M™ Power Grip Magic Pad Rivet Applicator CMP-1

Designed exclusively for 3M™ Controltac™ Graphic Films with Comply™ Adhesive. The 3M magic pad rivet applicator, with its large foam pad, makes it easy to conform heated film around rivets. The larger handle grip is designed for comfort.



### 3M™ Roller L (large)

Custom designed durable firm roller for

vehicle channels.



### 3M™ Roller S (small)

Custom designed durable firm roller used as finishing tool in vehicle channels.



# Textured Surface Application Tools

### 3M™ Textured Surface Applicator TSA-1

Specialized tool used to conform large areas of film onto a textured surface.



### 3M™ Textured Surface Applicator TSA-2

Specialized tool used to conform heated film to mortar joints and inside corners.



### 3M™ Textured Surface Applicator TSA-3

Specialized tool used to conform heated film around cut edges and in corners and mosaic-type applications.



### 3M™ Installation Kit for Textured Surfaces

Combines all of the necessary tools in one kit for installing textured surface graphics. Includes Steinel® Heat Gun, TSA-1, TSA-2 and TSA-3.



### 3M™ Two-Handled Textured Surface Applicator TSA-4 for Large Areas

Increase installation productivity for graphics on textured surfaces. Requires heat gun, not included.





## Large format graphics. Our specialty.

- 3M™ Controltac™ Graphic Film & 3M™ Comply™ Adhesive for fast and easy installations
- Changeable adhesives for cooler weather installs
- Adhesive Test Kits to help you avoid costly graphic failures
- Expertise and experience to help you grow your business

Visit [3MGraphics.ca](http://3MGraphics.ca) to learn more, or contact **1-800-3M-HELPS (364-3577)**

There is no representation, warranty, conditions, guarantee or other obligation of 3M or its employees, either directly or indirectly, arising out of this brochure. Please refer to specific product packaging, user instructions and related documents for complete details. 3M shall not be liable for any loss or damage, whether direct, indirect, incidental, special or consequential arising out of the sale, use or misuse of 3M products or the user's inability to use such products.

Product Use: Many factors outside of 3M's control and uniquely within user's knowledge and control can affect the use and performance of a 3M product in a particular application. Given the variety of factors that can affect the use and performance of a 3M product, user is solely responsible for evaluating the 3M product and determining whether it is fit for a particular purpose and suitable for user's method of application.

3M, 3M Science, Applied to Life., Controltac, Comply, Scotchal, Envision, Panagraphics, Di-Noc, and Scotchgard are trademarks of 3M.  
© 2017, 3M. All rights reserved. Used under license in Canada.  
Steinel® is a registered trademark of Steinel GmbH.  
161106989 E BA-17-22396

**3M**

**3M Graphics Market**  
**3M Canada**  
PO Box 5757  
London, ON N6A 4T1  
1-800-3M HELPS