

Colors That Look Good Day or Night

You want your translucent or backlit images to make a lasting impression in all kinds of light. 3M has hundreds of colors in 3M™ Scotchcal™ Translucent Graphic Films that look good in sunlight or when backlit at night.

Many of 3M's translucent film colors have simulated PANTONE® color references. While this color card reference guide shows only 3M's standard translucent colors, we also have

more than 450 custom colors, many of which are formulated to simulate PANTONE color references. Use our custom color matching capabilities to help reproduce your corporate identity colors. To find out more about the full range of simulated PANTONE colors, refer to our PANTONE Color Simulator which can be found on our website, 3Mgraphics.com, or contact your 3M information source.

The chart below is designed to be used with the PANTONE Color Simulator to help you identify the specific films available for your application. Before making your final determination, refer to

3M Product Bulletins for compatible products and construction details, or check with your 3M information source to be sure the product you're considering is the one best suited for your needs.

Applications	3M™ Scotchcal™ Films							
	Series 3630	Series 3632GPS	3640GPS	3642GPS	Series 7725SE	Series 210 (Gerber)	Series 230 (Gerber)	Series 3635 (3M Light Management Film)
Internally-Illuminated Signs	■	■					■	■
Point-of-Purchase Displays	■				■	■	■	■
Window Graphics	■	■			■	■	■	■
Illuminated Awnings	■	■					■	■
Electronically-Cut Graphics	■	■			■	■	■	■
Graphic Protection System		■	■	■				

Visit our website

Visit our website at 3Mgraphics.com and open the door to a wealth of information about 3M products for the graphics market.

To help with your selection, you will also find the following tools:

- Color Profile Selector
- PANTONE® Color Simulator
- Film Selector
- Technical Bulletins
- Application Videos
- Where to Buy

With 3M's integrated, worldwide line of products for the graphics market, you can create images you want, anywhere you want them.

For more information, contact your 3M sales representative, or visit our website to obtain Product and Instruction Bulletins.

Every effort has been made to ensure the accuracy and completeness of the information in this brochure. 3M, however, assumes no liability as a result of any errors or inaccuracies which may exist.

3M, ElectroCut and Scotchcal are trademarks of 3M.

The user is responsible for evaluating and determining whether this 3M Product is suitable and appropriate for a particular use and intended application. Except as set forth herein, 3M makes no other warranties, express or implied, including, but not limited to, any implied warranty of merchantability or fitness for a particular purpose or implied warranty arising out of a course of dealing, custom, or usage of trade. Except where prohibited by law, 3M shall not under any circumstances be liable to the Buyer for any direct, indirect special, incidental, or consequential damages (including, but not limited to, downtime, loss of profits, revenue, business, opportunity or goodwill) resulting from or in any way related to 3M Products or the sale of 3M Products. This limitation of liability applies regardless of the legal or equitable theory under which such losses or damages are sought.

3M Graphics Market Center Color Card Reference Guide



3M

Graphics Market Center
3M Center, Bldg 220-12E-04
St. Paul, MN 55144 USA
General Information:
1-800-374-6772
Technical Information:
1-800-328-3908
www.3Mgraphics.com

3M Canada
Box 5757
London, Ontario
Canada N6A 4T1
1-800-265-1840
Fax 519-452-6245

3M México S.A. de C.V.
Av. Santa Fe No. 55
Col. Santa Fe, Del. Alvaro
Obregón
Mexico D.F. 01210
5255-5270-0400
Fax 5255-5270-2277

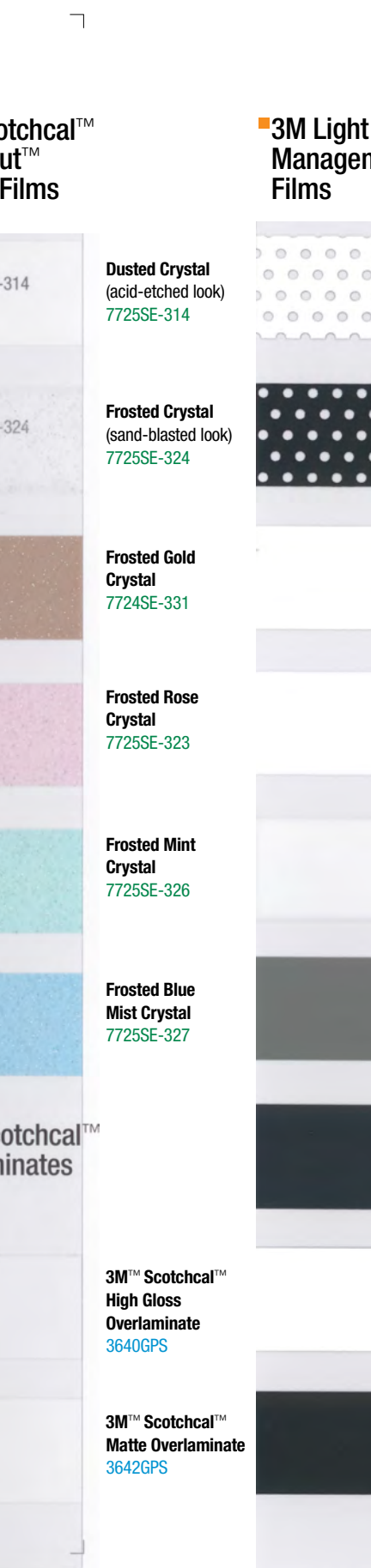
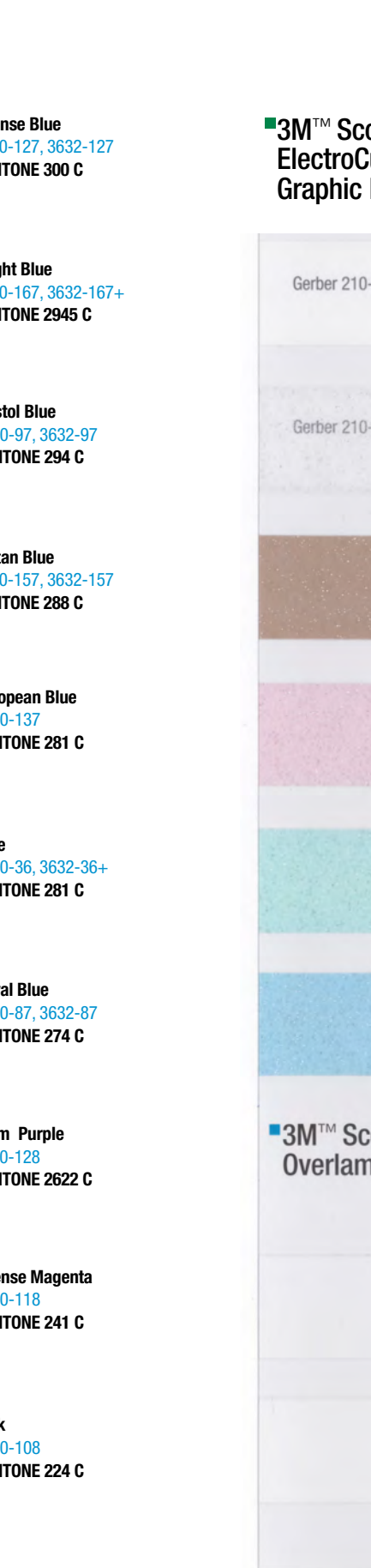
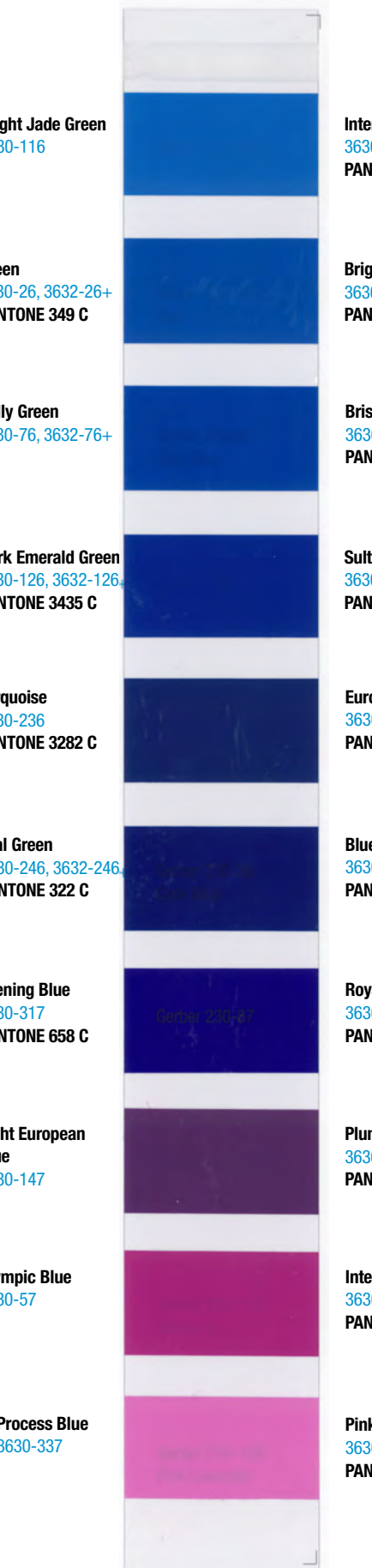
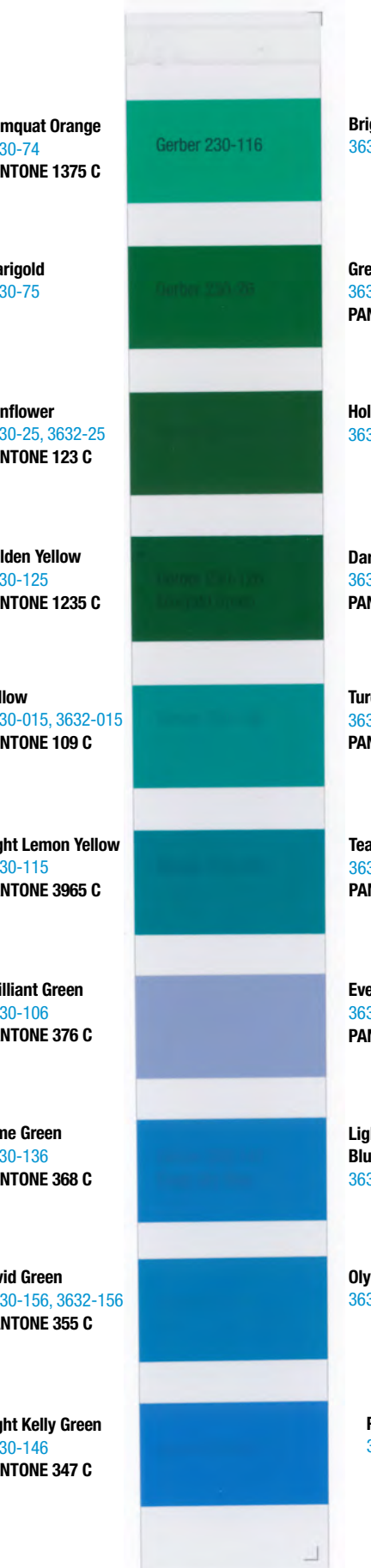
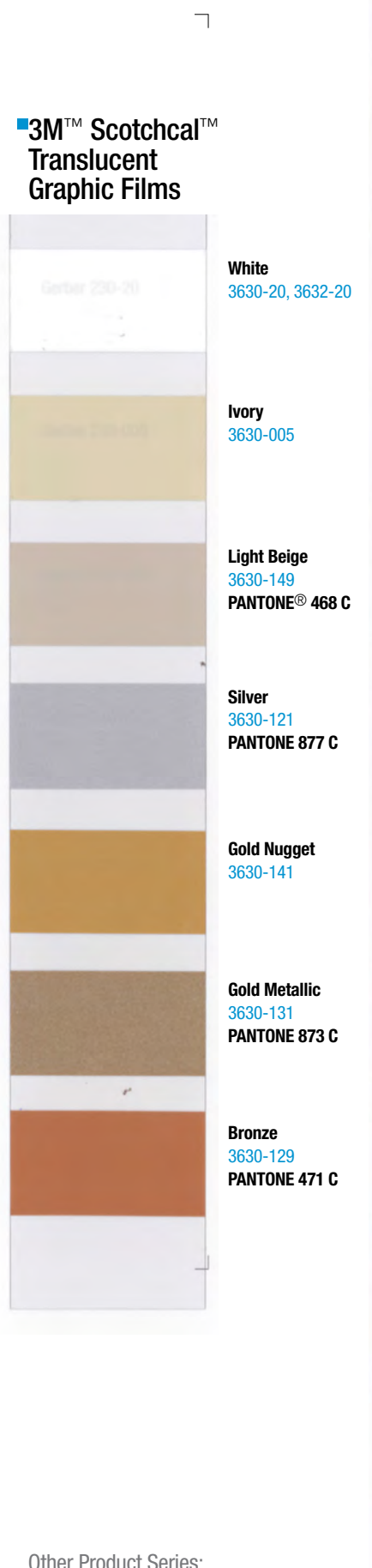
3M Puerto Rico, Inc.
350 Chardon Ave
Suite 1100
San Juan, PR 00918
787-620-3000
Fax 787-620-3018

Price: \$8.00
Release B, April 2009
Please recycle. Printed in USA.
© 3M 2009. All rights reserved.
75-5100-2357-7



Graphic Films for Translucent Applications

The colours shown here are representative only. For accurate colour samples, contact your supplier of 3M films or see the Where to Buy section of 3mcolours.com.au



Other Product Series:
 Most colors are available in other product series. Please reference your price pages or contact Customer Service for availability.
 * These colors are opaque.
 For film samples of these products, contact your 3M information source.
 Simulations of the PANTONE® -identified color standard are listed to the right of the Translucent films.
 PANTONE® is the property of Pantone, Inc. © Pantone, Inc., 2003

Can't find your color?
 Allow us to custom match your color with our three-day, no-charge color match service.
 Contact your local 3M Distributor or 3M Sales Representative and find out how easy it is to get the finest quality film in a color you want.

Translucent Films for backlit sign applications

Note that the elements used in sign construction, including sources of illumination, adhesives and substrates, can affect color. In most instances, color variation is slight, but certain elements will have a more noticeable effect, particularly on shades of white. PANTONE® color numbers are based on reflective light measurements of product samples applied to a standard white substrate.

** Available in standard and custom colors. ***For use inside a lighting cabinet. ****For second surface application only.